

**£29,950**



## Classic Replica Gentleman's Steam Launch *Surta*

**Year**  
1988

### Dimensions

LOA - 12.8m  
Beam - 2.83m  
Minimum draft - 0.91m

**Maximum draft** - 0.91m

### Engines

Total power - 15hp  
Total engines - 1  
Type - W Sisson & Co of  
Gloucester 5"+7" x 7.5" condensing  
compound

**Year built** - 1950

### Tanks

### Accommodation

Number of double berths - 1  
Number of heads - 1

### Windsor Racecourse Marina

Maidenhead Road, Windsor, Berkshire SL4 5HT

**Contact** Jo Minton and Josh Lindley

**Email** [racecourseboatsales@tingdene.net](mailto:racecourseboatsales@tingdene.net) **Tel** 01753 851 717

## DESCRIPTION

This 42 Replica Gentlemans Steam Launch Surta was built by Bristol shipyard Owner David Abels to his own design and for his own use in 1988, Surta has been owned by the current owners since 2002 & has been a regular guest at Thames and other Steam Boat Association events. She is built to canal gauge: 42 LOA & LWL, 610 Beam, Draft 3 & she displaces 7.5 tons.

Boat Safety Scheme Certificate until 6th of May 225

Environment Agency Thames River Registration until 31st December 2021

Boiler Certificate until 8th November 2022

Boat Safety Scheme Certificate until 6th May 2025

## FULL SPECIFICATION

### Engine

**Surta's engine** is a 5"+7" x 7.5" condensing compound built 1950 by W Sisson & Co of Gloucester. Rated at 15hp the engine was built for use in Farnborough Technical College. It has a piston valve on the HP end driven by Stephenson's link motion

reversing gear, & a slide valve & slip eccentric on the LP end. The skin condenser is 18 sq ft, welded to the outside of the hull & the right handed three bladed bronze propeller is 24"x 53".

### Boiler

Her boiler is newly re-ticketed. It is a 3-drum all-welded steel water tube type designed by John Cooper, built 2003 by Blackbeth Engineering (Devon). Diesel fired, it has an output of 300lbs per hour at

150psi. Boiler feed is by engine driven pump, injector or hand pump, and there is a Windermere kettle & whistle – of appropriate tone.

### Accommodation

She provides adequate living space for longer cruises. A saloon which converts into a double berth, a galley

with cooker & fridge, head & shower.

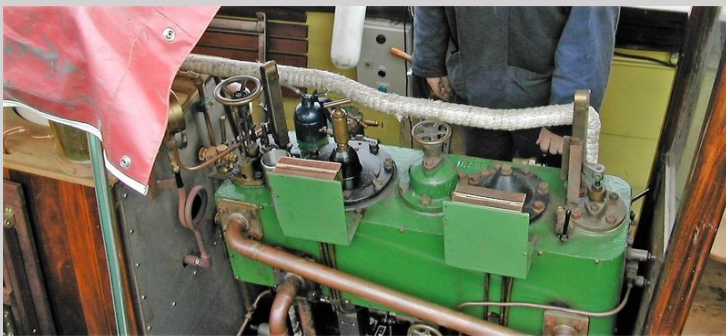
### Additional Items Included

- Tools
- Crockery & cutlery

- Detailed drawings for the boat & engine
- Spare parts



# IMAGES



## DISCLAIMER

Whilst every care has been taken in there preparation, the correctness of these particulars is not guaranteed. The particulars are intended only as a guide and they do not constitute a term of any contract. A prospective buyer is strongly advised to check the particulars and where appropriate to have the vessel fully surveyed, inspected and sea or river trialed depending on location of the boat

## Windsor Racecourse Marina

Maidenhead Road, Windsor, Berkshire SL4 5HT

**Contact** Jo Minton and Josh Lindley

**Email** [racecourseboatsales@tingdene.net](mailto:racecourseboatsales@tingdene.net) **Tel** 01753 851 717

BRITISH  
MARINE  
BOAT RETAILERS  
& SERVICES

OVER 150 NEW & PRE-OWNED  
CRAFT LYING AT OUR MARINAS

  
**CRANCHI**  
Boatbuilder since 1870

Distributors of

 **VIKING**  
RIVER & CANAL BOATS

 **TINGDENE**  
NARROWBOATS AND WIDEBEAMS

All offers made on new and pre-owned craft are subject to contract and 'E & OE'