

£265,000



Dutch Barge RLL Boats Avon Belle *Bellus Diem*

Year

2016

Dimensions

LOA - 18.29m

Beam - 3.81m

Minimum draft - 0.79m

Bridge clearance - 3.2m

Engines

Total power - 135hp

Total engines - 1

Type - John Deere CD4045TFM50

Hours - 574

Tanks

Fresh water tanks - 1 (2500L)

Fuel tanks - 2 (550L)

Holding tanks - 1 (900L)

Accommodation

Number of double berths - 2

Number of cabins - 2

Number of heads - 2

Number of bathrooms - 2

Upton-on-Severn Marina Upton-upon-Severn, Worcestershire WR8 0PB

Contact Oliver Wylie and Penny Green

Email uptonboatsales@tingdene.net **Tel** 01684 593 111

DESCRIPTION

This beautifully presented 60x12' Dutch style barge is available fully furnished, (excluding some minor items). ♦ The vendor will consider offers excluding the furniture as well.

This boat has been used as a live aboard by its current owners and would make an ideal houseboat or a luxurious base for exploring the Severn, Avon and further afield.

The boat is fitted out to a very high standard throughout. ♦ Serviced and Blacked in July 2021 and with a Boat safety Certificate until June 2024

♦ Double en-suite cabin aft. ♦ Wheelhouse converts to a double berth. ♦



FULL SPECIFICATION

Navigation Equipment

Furuno GP1670 - GPS, Plotter, Depth sounder and compass

VHF Icom IC-M323

Electric horn

Full navigation lights

Windscreen wiper at helm

Spotlight - mounted on mast

Hydraulic bow and stern thrusters

Engine hour meter - 573.7

Domestic equipment

6 x 105 amp leisure batteries

1 x 95 amp engine battery

1 75amp Generator battery

Victron Quattro 3000 battery charger

Victron Galvanic isolator VDI16

Victron Color Control

Victron Battery monitor

240v ringmain - sockets throughout the boat

Generator - Mase IS6.5

Solar panels: Solara 2 x 140W

Victron MPPT Solar controller 100/30

Immersion heater

Calorifier

Oil fired central heating

Chilli Penguin solid fuel stove

Toilet to holding tank with pump out

2 x Showers

Heritage oil fired range (similar to an Aga but quicker to warm up!)

240v integrated fridge

Neff 240v Microwave oven

Bosch Aridperfect Washing machine

Samsung Heatpump Tumble Drier

Bosch Dishwasher

40" Panasonic TV

Pressurised hot and cold water

Safety Equipment

3 x Manual fire extinguishers

Engine room fire extinguisher

3 x auto bilge pumps

Fire blanket

Life buoy

Mooring ropes

Fenders

Mooring stakes

Boat hook

Lock key

Deck equipment

Anchor

Hydraulic anchor winch

Removable davits

Detachable stanchions and rope

Teak decking on rear deck

General information

Air draft: Wheelhouse up: 3.2M

Wheelhouse down: 1.83M

Mast up: 4.4M

Engine last serviced: June 2021

Hull last blacked: July 2021

Engine: John Deere 135hp CDOU45 TFM50 - 2016

Engine power: 135hp - 100.7kw

Engine serial No: 4135HX-022139

Berths: 1 double cabin ensuite

Wheelhouse converts to a double

Boat Safety expiry: 09.06.2024

Fuel capacity: 2 x tanks - 1100 litres total

Water capacity: 2500 litres

Waste tank capacity: 900 litres

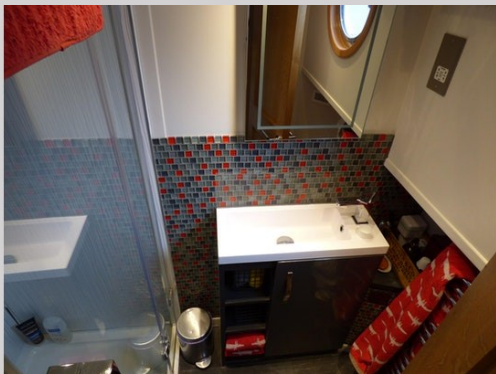
NO GAS on boat

IMAGES

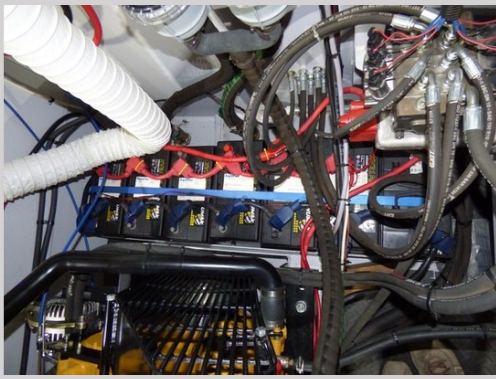




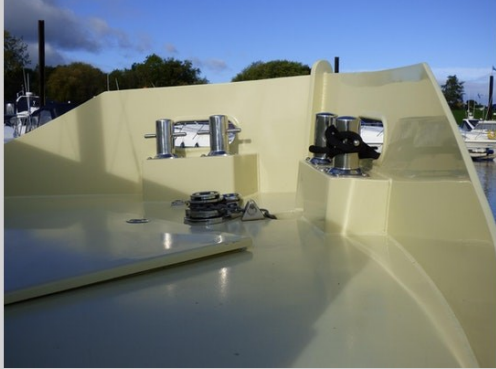












DISCLAIMER

Whilst every care has been taken in there preparation, the correctness of these particulars is not guaranteed. The particulars are intended only as a guide and they do not constitute a term of any contract. A prospective buyer is strongly advised to check the particulars and where appropriate to have the vessel fully surveyed, inspected and sea

or river trialed depending on location of the boat

Upton-on-Severn Marina Upton-upon-Severn, Worcestershire WR8 0PB

Contact Oliver Wylie and Penny Green

Email uptonboatsales@tingdene.net **Tel** 01684 593 111

BRITISH
MARINE
BOAT RETAILERS
& CHARTERS


CRANCHI
Boatbuilder since 1870

Distributors of
 **VIKING**
RIVER & CANAL BOATS

 **TINGDENE**
NARROWBOATS AND WIDEBEAMS

All offers made on new and pre-owned craft are subject to contract and 'E & OE'